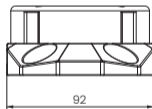
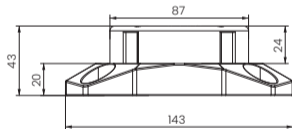
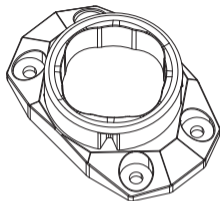
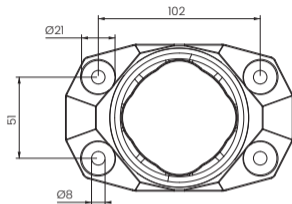


DIY Dock with Base Plate

User Manual

*Beyond
Power*

Specifications



Unit: mm

Dimensions (LxWxH)	5.6x3.6x1.7 inches (143x92x43 mm)
Weight	2.2 lbs (909 g)
Material	Stainless Steel

Wood Panel Installation Requirements

Wood Panel Requirements

High-quality plywood is recommended. The wood panel must be at least 40 mm (1-5/8 in) thick.

Screw Requirements

Use M8 stainless steel self-tapping screws with a minimum length of 35 mm (1-3/8 in).

Bolts must meet a minimum strength of ISO Grade 8.8 or SAE Grade 5.

Use flat washers with an outer diameter less than 20 mm (0.79 in).

Additional Preparation *The tools need to be prepared by the user.



5/16x1-3/8" or M8*35
Hex Socket Cap Head Self
Tapping Screws
& flat washers
(Length of at least 1-3/8in / 35mm)



Drill Bit
(1/4" or 6mm)

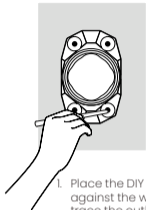


Hex Bit
(1/4" or 6mm)

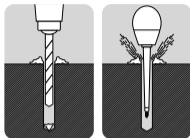
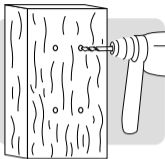
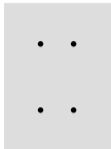


Electric Drill

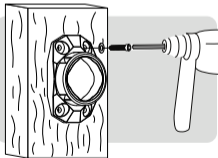
Installation



1. Place the DIY Dock with Base Plate against the wall and use a pencil to trace the outline along the screw holes.



2. Use a 6 mm drill bit to drill pilot holes. The hole depth should be 2-3 mm deeper than the length of the M6 self-tapping screws. Remove all wood chips and debris from the holes to ensure proper screw engagement.



3. Use a hex bit and power drill to drive the M6 self-tapping screws into the pre-drilled holes.

Concrete Wall Installation Requirements

Concrete Wall Requirements

Must be solid, non-hollow, load-bearing concrete with a minimum thickness of 100 mm (4 in) to ensure proper anchoring.

Drill Bit Size

Recommended: 10 mm (3/8 in)

Bolt Requirements

Use 5/16x3 in or M8x80 mm stainless steel wedge anchors (minimum length: 80 mm / 3 in)

Use flat washers with an outer diameter less than 20 mm (0.79 in).

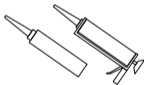
Additional Preparation

*The tools need to be prepared by the user.



5/16x3" or M8*80
Wedge Anchors
& flat washers
& hex nut

(Length of at least 3in / 80mm)



Anchoring Adhesive
& Applicator Gun



Drill Bit
(3/8" or 10mm)

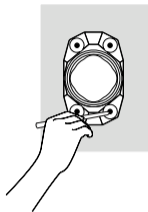


Electric Drill

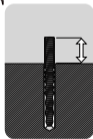
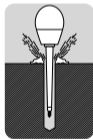
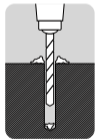
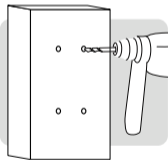


Ratchet Wrench

Installation

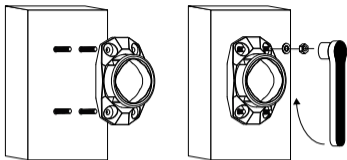


1. Place the DIY Dock with Base Plate against the wall and use a pencil to trace the outline along the screw holes.



0.86-0.98in
(22-25mm)

2. Use a drill with a 10 mm diameter bit to drill holes in the wall, following the circular marks, to a depth of at least 50 mm, ensuring that the exposed length is between 22 and 25 mm. Clean the holes thoroughly to remove any dust. Insert the mixer nozzle into the rear of the hole and start to squeeze the gun to dispense the material.



3. Immediately insert the bolt into the hole. Leave the bolt undisturbed until the cure time has passed, then attach the fixture.

Notice

The Beyond Power DIY Dock with Base Plate is for customers customizing at their own risk. Use it carefully, follow instructions, and ensure third-party parts are reliable—you are fully responsible. Beyond Power is not liable for any damage, injury, or issues from the DIY Dock with Base Plate or non-Beyond Power mounts. By using this product, you accept all risks. We also do not support or take responsibility for third-party businesses using the DIY Dock with Base Plate to create accessories or products.



Scan the QR code to access additional resources and information,
or visit <https://help.beyond-power.com>.

Subscribe for more information



Copyright © 2025 Beyond Power Inc. All rights reserved.
Beyond Power, the Beyond Power logo, VOLTRA and AnyMount™ are trademarks
of Beyond Power Inc., filed application in the U.S. and China.

Printed in China.